

616173

AMENDMENT TO
DECLARATION OF CONDOMINIUM
OF
RIVER RUN C, A CONDOMINIUM
6100 RIVER RUN DRIVE
SEBASTIAN, FLORIDA 32958

BY: J. Baumann, D.C.

09 SEP 25 PM 3: 11

THIS AMENDMENT, made this 22nd day of September, 1989 by River Run Development, Inc., a Florida corporation, hereinafter called "Developer", for itself, its successors and assigns;

WITNESSETH:

WHEREAS, Developer recorded in the Public Records of Indian River County, Florida, that certain Declaration of Condominium of RIVER RUN C, a Condominium, said Declaration being dated March 16, 1987 and recorded in Official Record Book 764, Page 322, Public Records of Indian River County, Florida and;

WHEREAS, Paragraph 38 of said Declaration provides that the same may be amended and;

WHEREAS Amendment to Declaration of Condominium dated February 4, 1988, was recorded in Official Record Book 789, Page 2317, adding as-built sketches for Building 6 (6401); and,

WHEREAS the Exhibits reflected incorrect unit numbers;

NOW THEREFORE, the Declaration of Condominium of RIVER RUN C, a Condominium, is hereby amended in the following respect:

- 1. Exhibit D-6, Pages 13, 14, 15 and 16 are hereby replaced with the attached Exhibits D-6, Pages 13A, 14A, 15A and 16A.

In all other respects, the Declaration of Condominium is to remain as filed.

IN WITNESS WHEREOF, the Developer and Declarer, RIVER RUN DEVELOPMENT, INC., a Florida corporation, has executed this AMENDMENT to the Declaration of Condominium of RIVER RUN C, a Condominium, on the day and year first above written.

Signed, sealed and delivered
in the presence of:

RIVER RUN DEVELOPMENT, INC.,
a Florida corporation

Sandra Carpenter
Witness

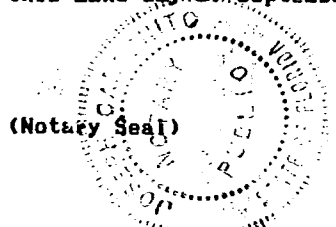
By: *Henry J. Muller*
Henry J. Muller, President

[Signature]
Witness

STATE OF FLORIDA
COUNTY OF INDIAN RIVER

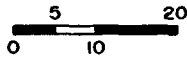
I HEREBY CERTIFY that on this day, before me, an officer duly authorized in the State and County aforesaid to take acknowledgments, personally appeared Henry J. Muller, well known to me to be the President of RIVER RUN DEVELOPMENT, INC., and he acknowledged executing the foregoing instrument freely and voluntarily under authority duly vested in him by said corporation and that the seal affixed thereto is the true corporate seal of said corporation.

WITNESS my hand and official seal in the State and County last aforesaid this 22nd day of September, 1989.

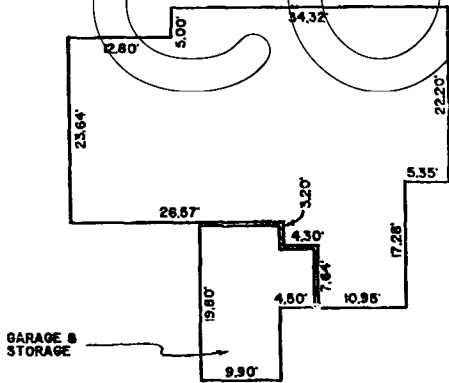


[Signature]
Notary Public
My Commission Expires: My Commission Expires Dec. 4, 1989
Bonded Thru Troy Faia - Insurance Inc.

RETURN TO: COMMERCIAL TITLE SERVICES



COPY



COPY

NOTES:

1. These plans and dimensions have been compiled from plans prepared by Charles Harrison Pawley, architect, and are supplemented by field surveys and measurements as deemed necessary by Morgan & Eklund, Inc.
2. "Unit boundary" is as defined by the declaration of condominium.
3. Common elements such as, but not limited to, conduits, wires, outlets, utility, etc. have not been graphically illustrated.
4. Interior partitioning as part of the units is not shown.

COPY

RIVER RUN C
AS - BUILT UNIT BOUNDARY PLANS

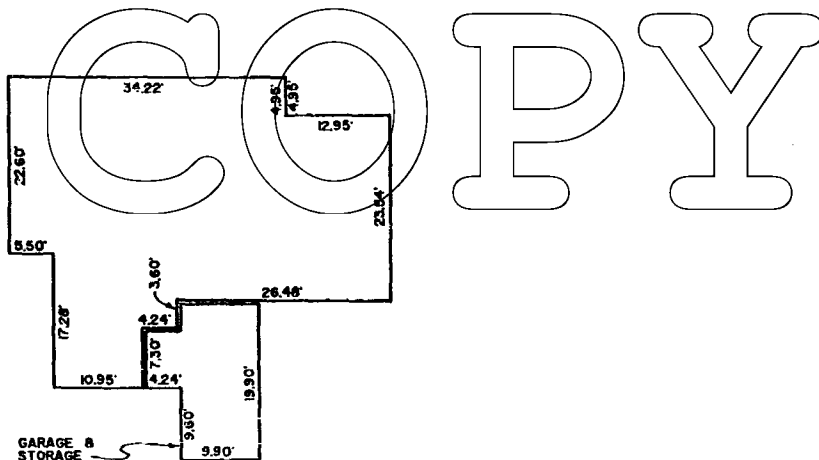
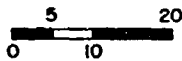
Exhibit D-6
Page 13A

1st FLOOR
UNIT 6403

MORGAN & EKLUND
PROFESSIONAL SURVEY CONSULTANTS

2030 40th AVE, SUITE 9 VERO BEACH, FL. 32980 305-569-2218
1500 SE 3rd CE (U-100) DEERFIELD BCH, FL. 33441 305-421-6882

BOUNDARY • MORTGAGE • ROUTE • CONSTRUCTION • TOPOGRAPHIC • CONTROL • HYDROGRAPHIC SURVEYS



COPY

COPY

NOTES:

1. These plans and dimensions have been compiled from plans prepared by Charles Harrison Pawley, architect, and are supplemented by field surveys and measurements as deemed necessary by Morgan & Eklund, Inc.
2. "Unit boundary" is as defined by the declaration of condominium.
3. Common elements such as, but not limited to, conduits, wires, outlets, utility lines, ducts, plumbing, lighting, etc. have not been graphically illustrated.
4. Interior partitioning as part of the units is not shown.

Exhibit D-6
Page 14A

RIVER RUN C
AS - BUILT UNIT BOUNDARY PLANS

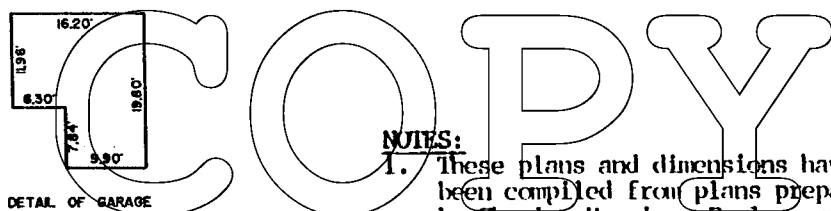
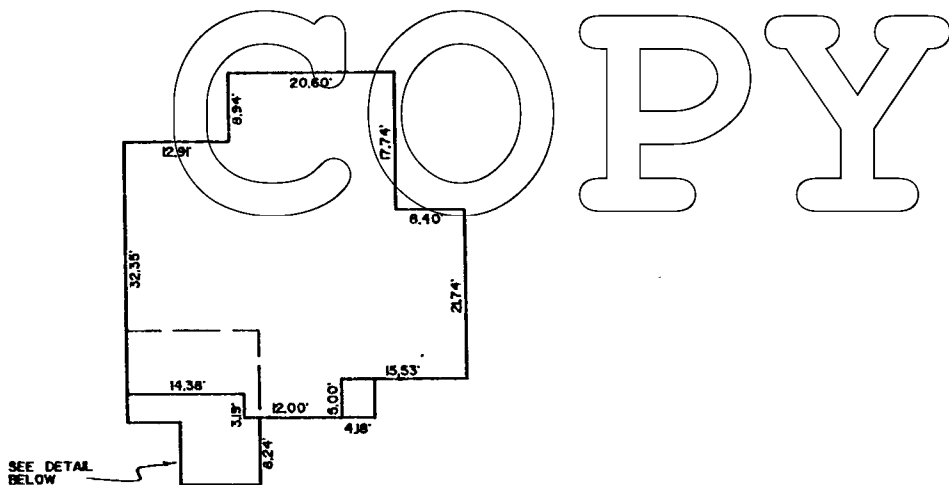
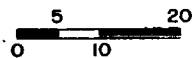
1st FLOOR
UNIT 6405

MORGAN & EKLUND

PROFESSIONAL SURVEY CONSULTANTS

2050 40th AVE, SUITE 9 1500 SE 3rd CT (D-100)
VERO BEACH, FL. 32980 DEERFIELD BCH, FL. 33441
305-569-2216 305-421-6802

BOUNDARY • MORTGAGE • ROUTE • CONSTRUCTION • TOPOGRAPHIC • CONTROL • HYDROGRAPHIC SURVEYS



NOTES:

1. These plans and dimensions have been compiled from plans prepared by Charles Harrison Pawley, architect, and are supplemented by field surveys and measurements as deemed necessary by Morgan & Eklund, Inc.
2. "Unit boundary" is as defined by the declaration of condominium.
3. Common elements such as, but not limited to, conduits, wires, outlets, utility, etc. have not been graphically illustrated.
4. Interior partitioning as part of the units is not shown.

COPY

RIVER RUN C

AS - BUILT UNIT BOUNDARY PLANS

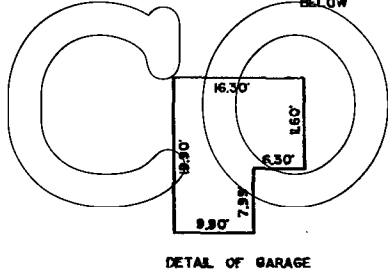
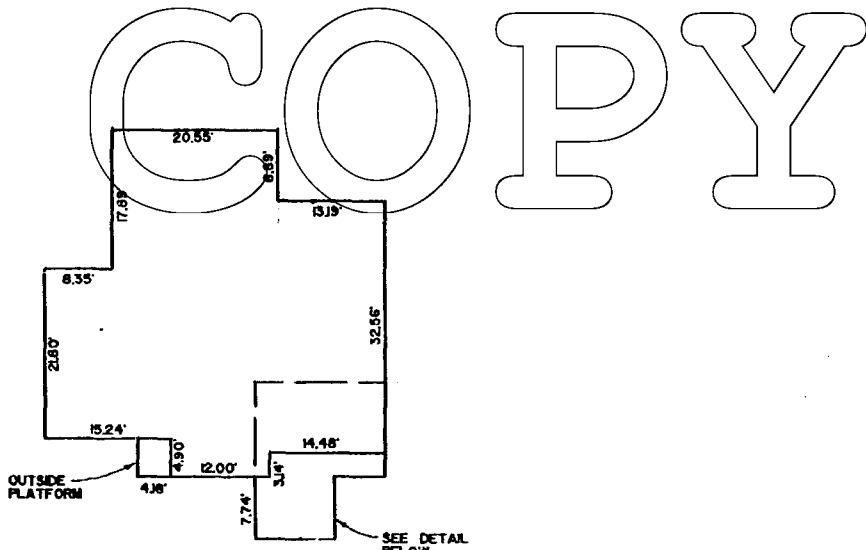
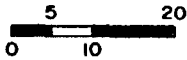
Exhibit D-6
Page 15A

2nd FLOOR
UNIT 6407

MORGAN & EKLUND
PROFESSIONAL SURVEY CONSULTANTS

2050 40th AVE, SUITE 9 1500 SE 3rd CT (D-100)
VERO BEACH, FL. 32980 DEERFIELD BCH, FL. 33441
305-569-2210 305-421-5882

BOUNDARY • MORTGAGE • ROUTE • CONSTRUCTION • TOPOGRAPHIC • CONTROL • HYDROGRAPHIC SURVEYS



NOTES:

1. These plans and dimensions have been compiled from plans prepared by Charles Harrison Pawley, architect, and are supplemented by field surveys and measurements as deemed necessary by Morgan & Eklund, Inc.
2. "Unit boundary" is as defined by the declaration of condominium.
3. Common elements such as, but not limited to, conduits, wires, outlets, utility lines, ducts, plumbing, lighting, etc. have not been graphically illustrated.
4. Interior partitioning as part of the units is not shown.

RIVER RUN C
AS-BUILT UNIT BOUNDARY PLANS

Exhibit D-6
Page 16A

2nd FLOOR
UNIT 6409

MORGAN & EKLUND
PROFESSIONAL SURVEY CONSULTANTS

2050 40th AVE, SUITE 9 1500 SE 3rd CT (D-100)
VERO BEACH, FL. 32960 DEERFIELD BCH, FL. 33441
305-569-2218 305-421-8882

BOUNDARY • MORTGAGE • ROUTE • CONSTRUCTION • TOPOGRAPHIC • CONTROL • HYDROGRAPHIC SURVEYS